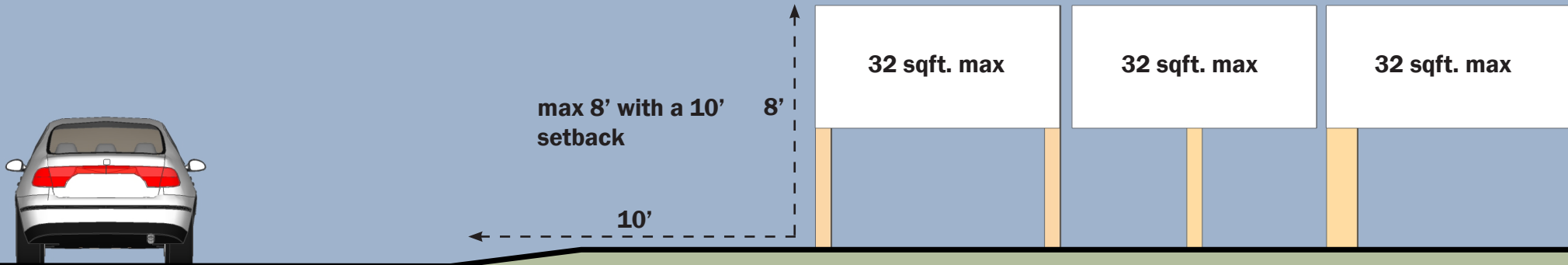
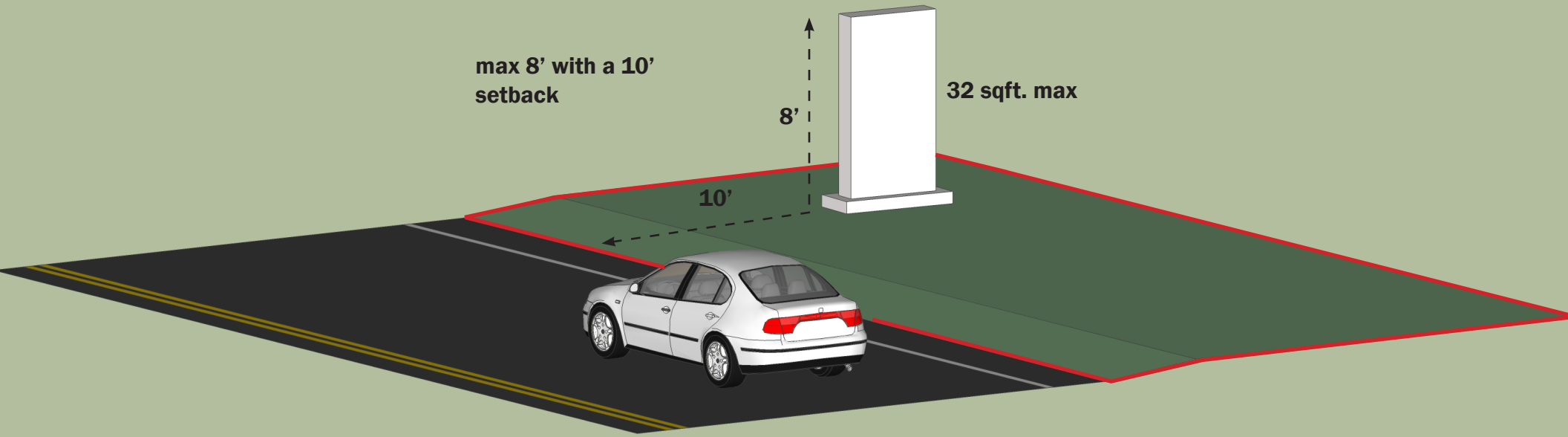


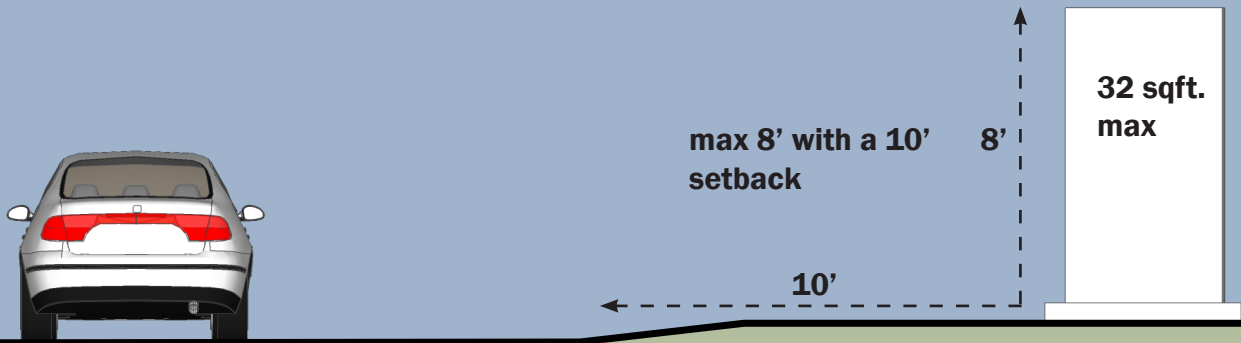
 Property Line



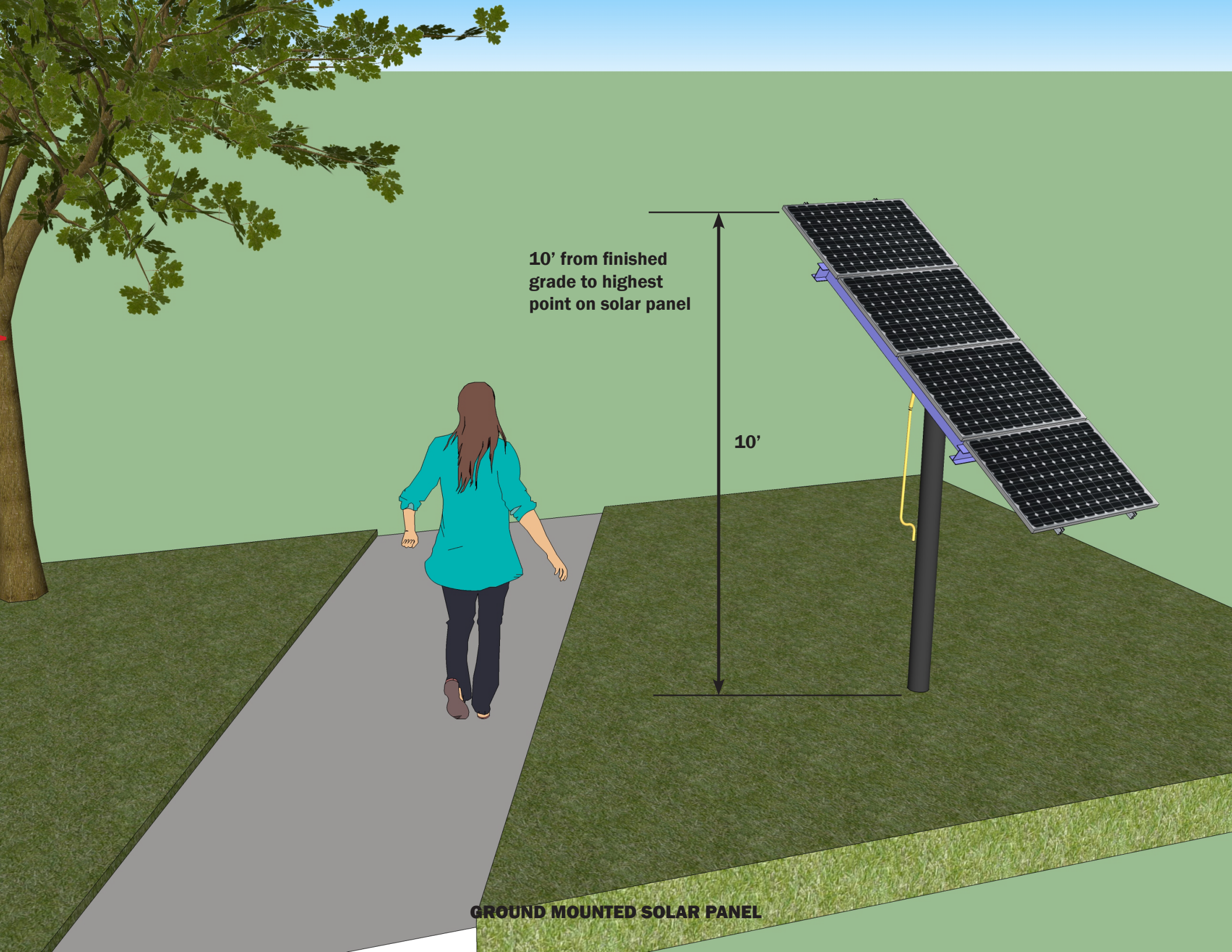
FREESTANDING POLE SIGN



 Property Line



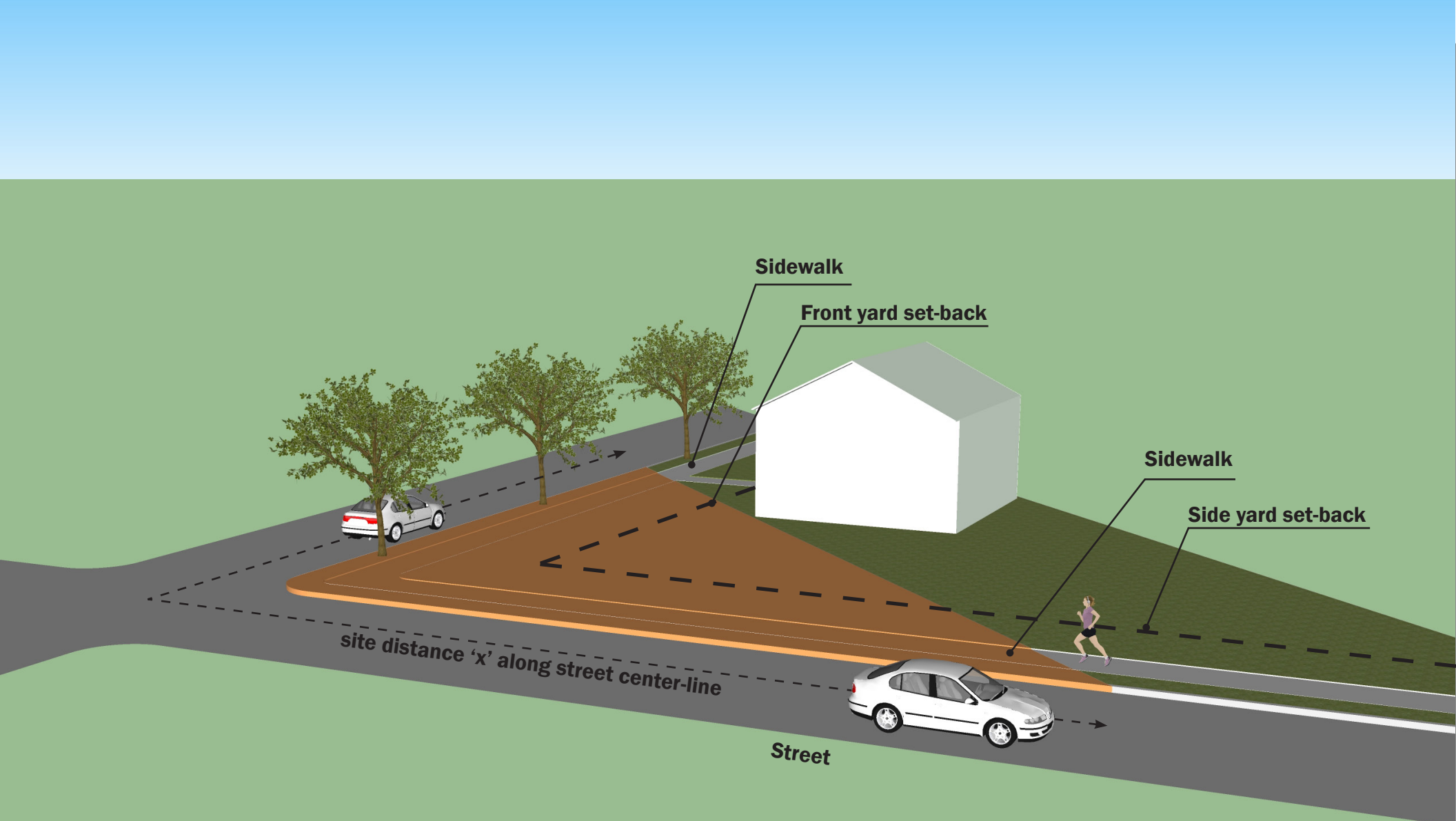
FREESTANDING MONUMENT SIGN



10' from finished grade to highest point on solar panel

10'

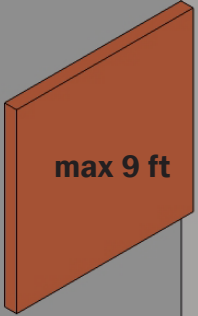
GROUND MOUNTED SOLAR PANEL



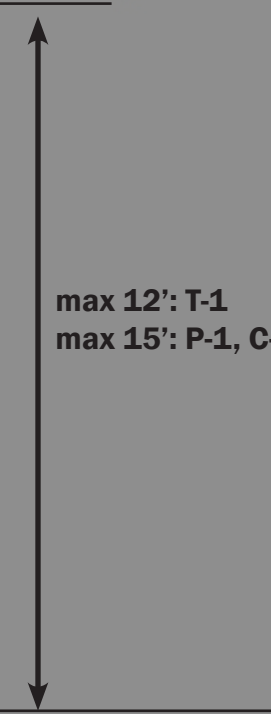
Site Distance (x)

Arterial Street	125 ft
Collector Street	100 ft
Minor Residential	100 ft
Cul-de-sac or Marginal Access	75 ft

SITE TRIANGLE

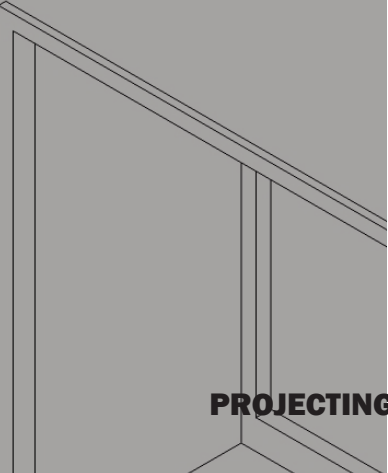
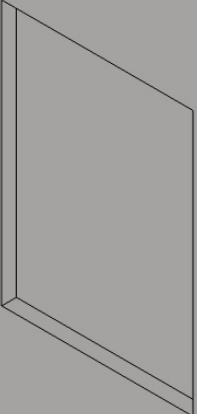
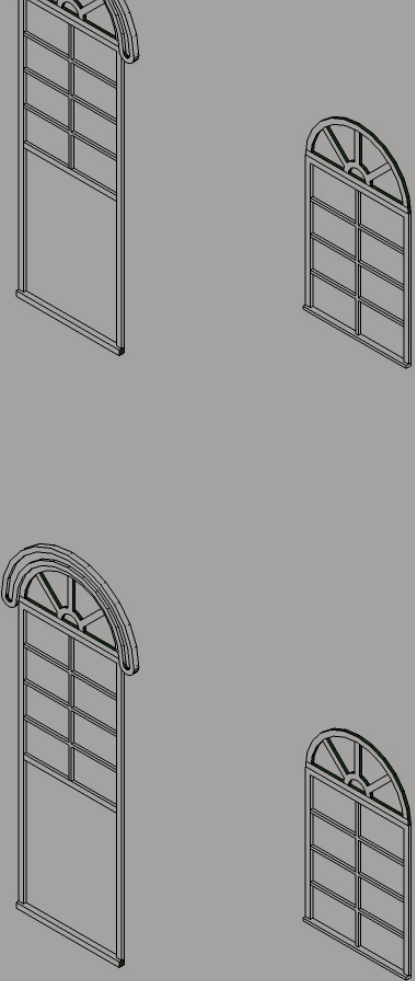


max 9 ft

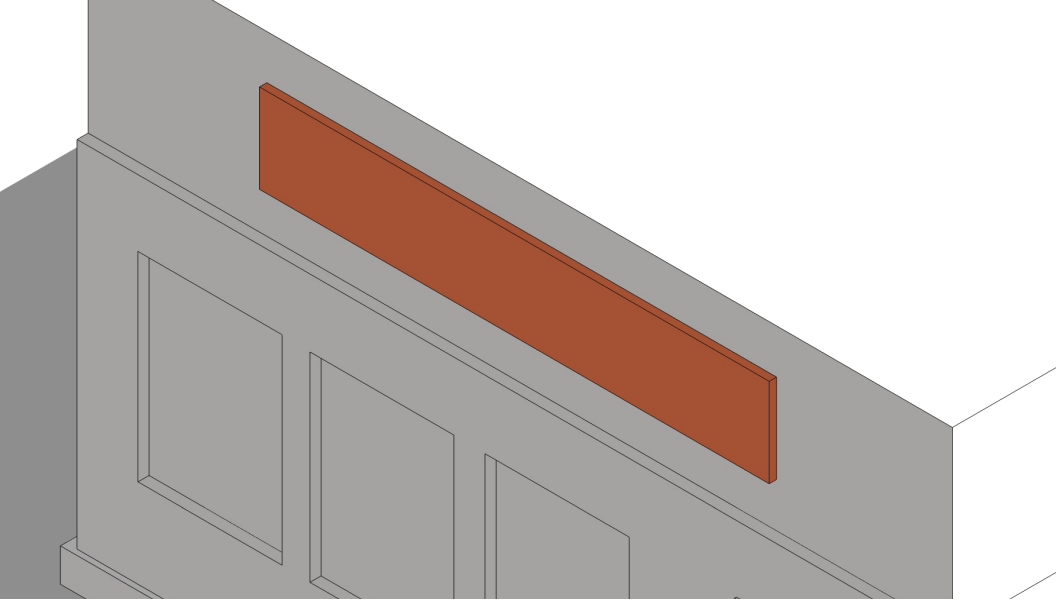


max 12': T-1

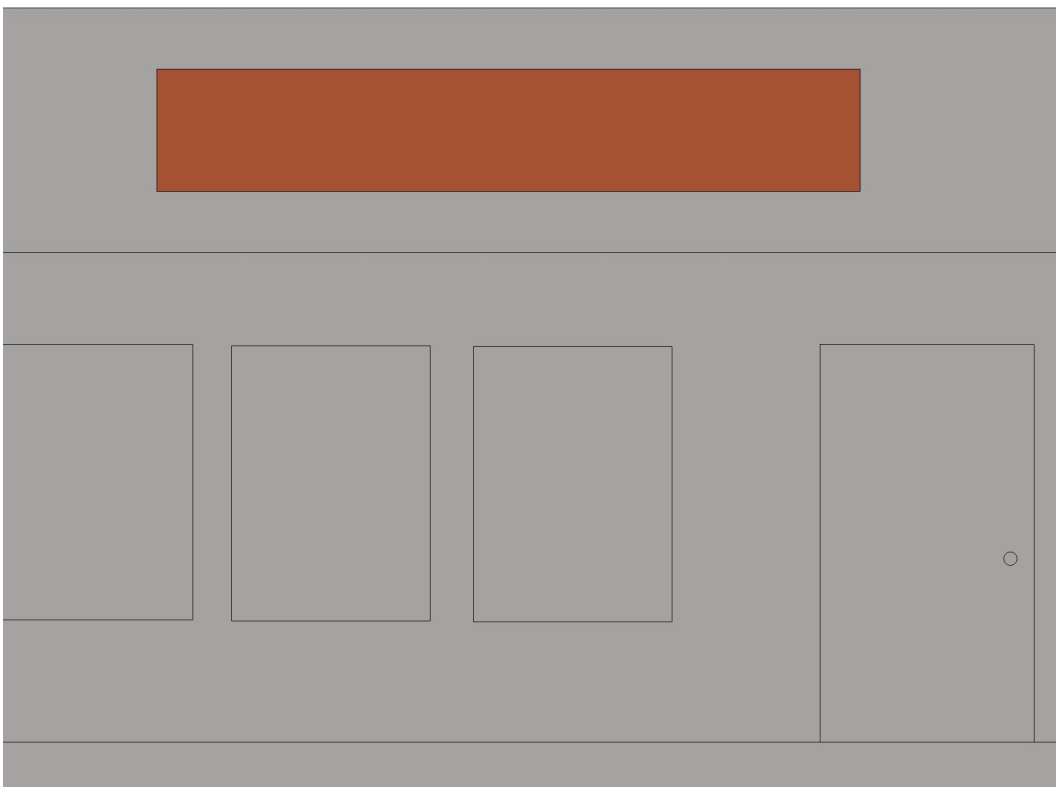
max 15': P-1, C-1/C-2



PROJECTING SIGN

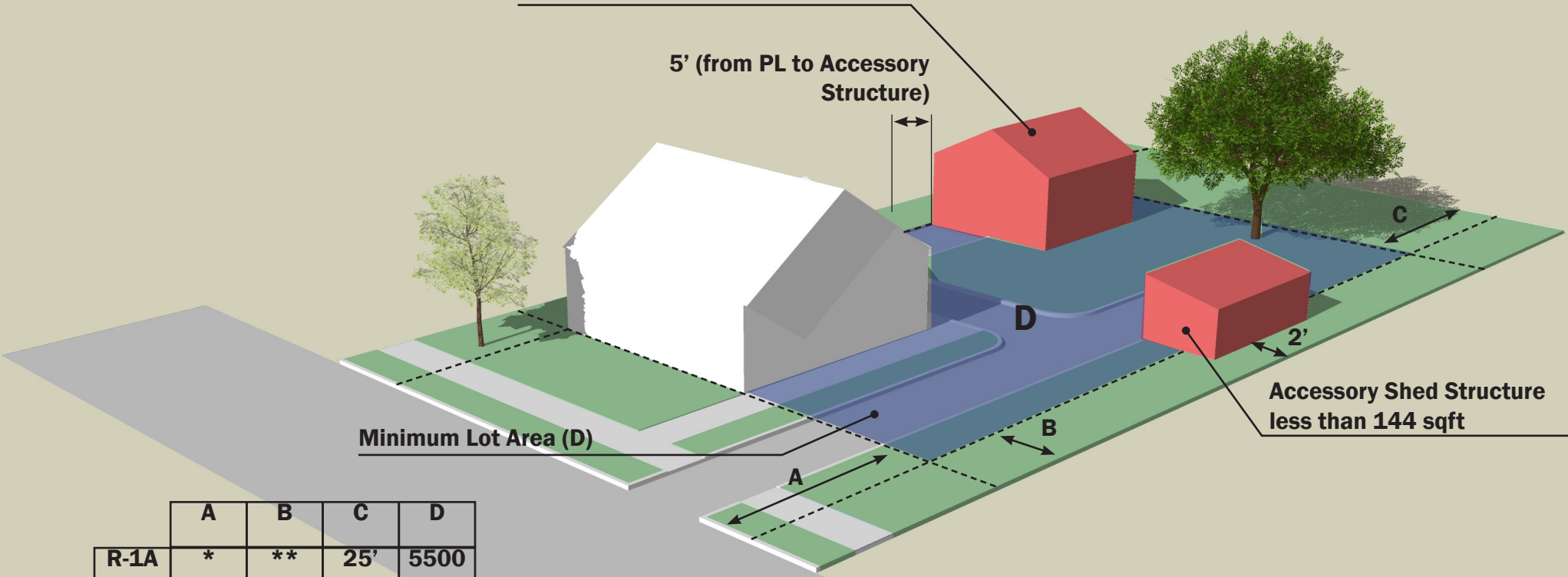


max 10% of total street front: T-1
max 15% of total street front: P-1, C-1/C-2



FACADE WALL SIGN

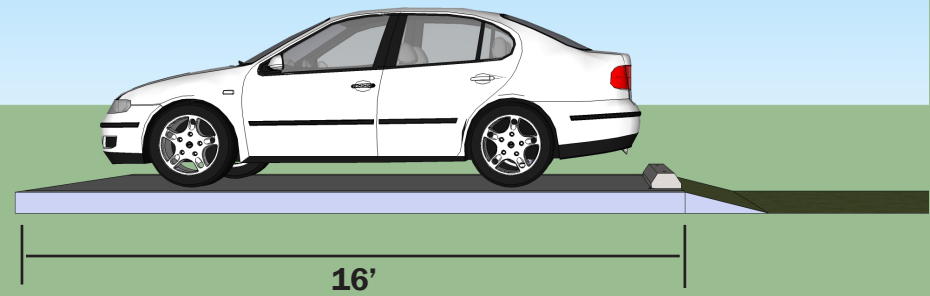
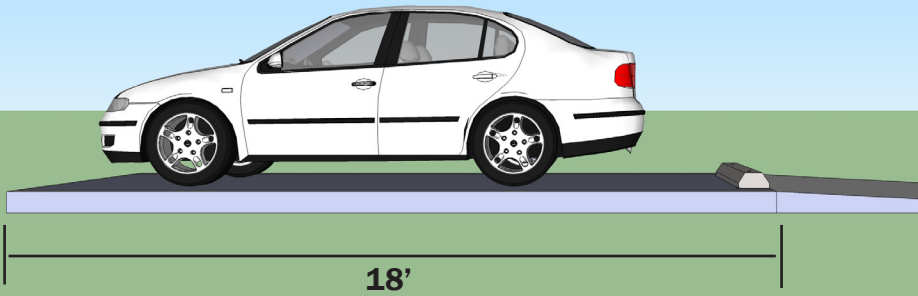
Accessory Structure
private, non-commercial garage:
max 900 sqft



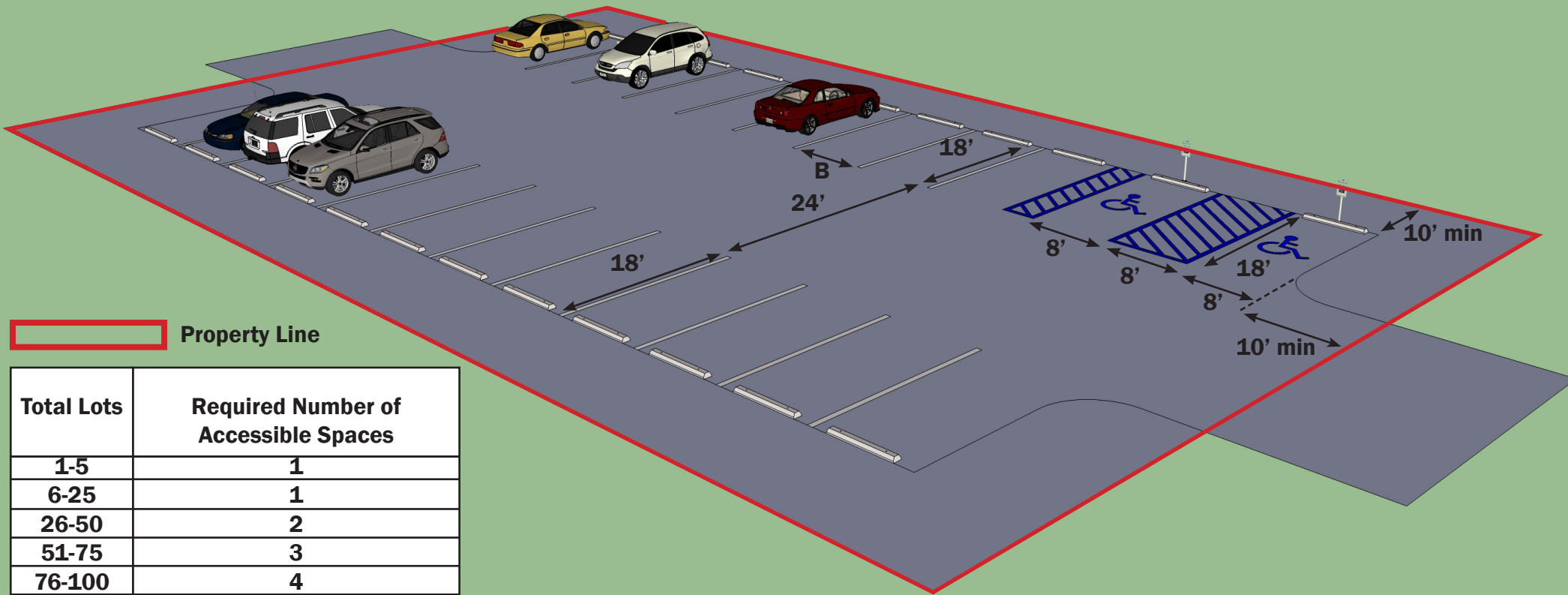
	A	B	C	D
R-1A	*	**	25'	5500
R-1B	*	***	25'	4000
R-2	*	***	25'	4000
T-1	20'	**	30'	8500
P-1	*	**	25'	5500
C-2	20'	10'	20'	10000

* average of nearest two adjacent lots
 ** minimum of 5' with combined total of no more than 12'
 *** minimum of 4' with combined total of no more than 12'

LOT STANDARDS



May choose to reduce parking space paving by 2'. The planting strip next to parking is increased by 2'.



 Property Line

Total Lots	Required Number of Accessible Spaces
1-5	1
6-25	1
26-50	2
51-75	3
76-100	4
101-150	5
151-200	6
201-300	7
301-400	8
401-500	9
501-1000	2% of total
1000+	20 plus 1 per 100 over 1000

Van-Accessible Parking Spaces: For every 8 accessible parking spaces, at least one shall be a van-accessible parking space. Each van-accessible parking space shall have a minimum width of 16 feet consisting of an 8 foot stall with an adjoining 8 foot access aisle to accommodate a wheel chari lift.

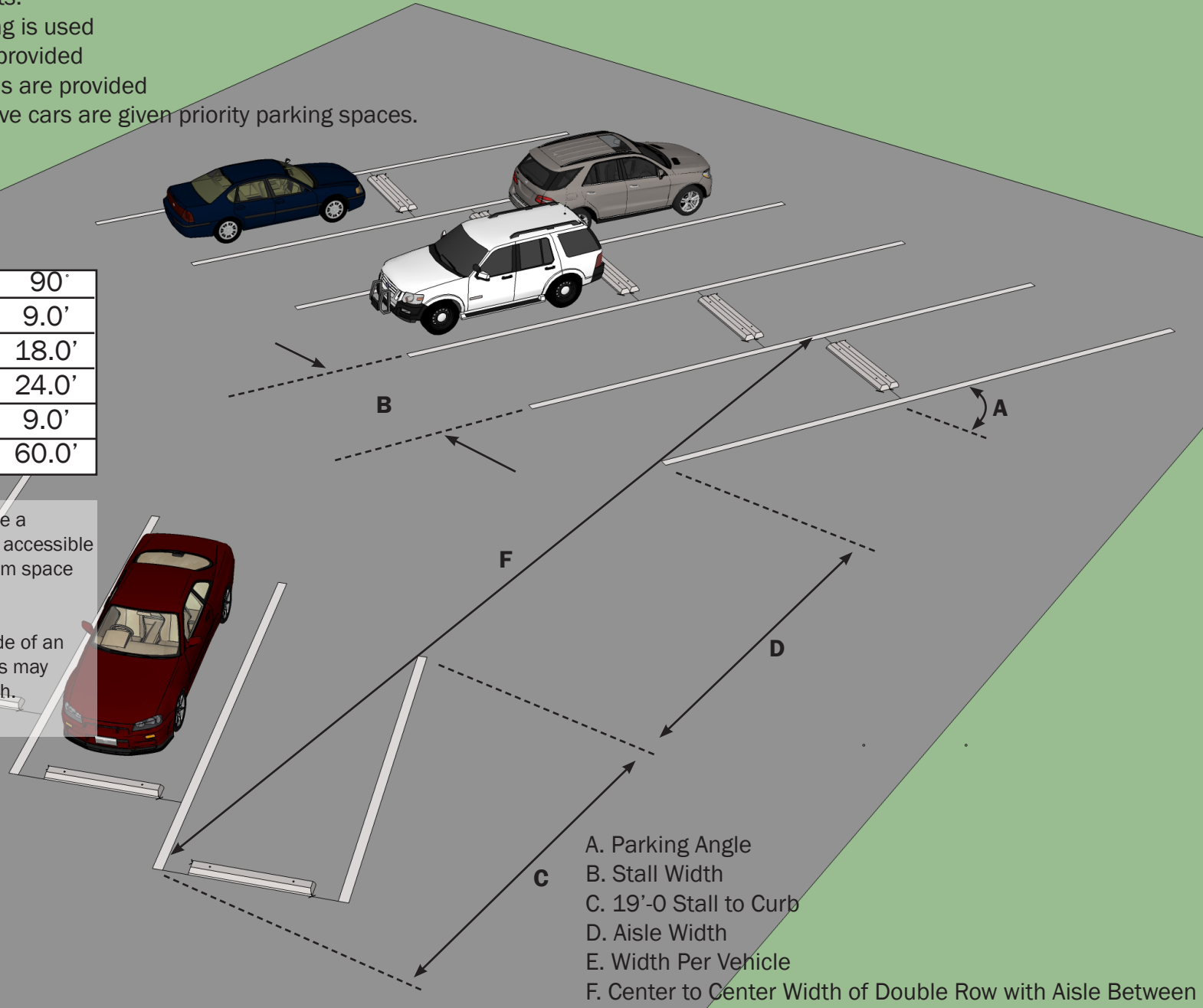
OFFSTREET PARKING REQUIREMENTS

- Note:
1. For parking over 100 cars, 20% may be designated compact car stalls and 8' x 17'.
 2. May reduce parking requirements:
 - a. by 10% if permeable paving is used
 - b. by 5% if bicycle racks are provided
 - c. by 5% if recharging stations are provided
 - d. by 5% if hybrid or alternative cars are given priority parking spaces.

A	30	45	60°	90°
B	9.0'	9.0'	9.0'	9.0'
C	10.4'	12.7'	18.0'	18.0'
D	15.0'	17.0'	20.0'	24.0'
E	18.0'	12.7'	10.4'	9.0'
F	35.8'	35.4'	56.0'	60.0'

*Standard handicapped spaces shall have a minimum space width of 14.0 ft. and van accessible handicapped spaces shall have a minimum space width of 17.0 ft.

** When parking is provided on only 1 side of an aisle the planning and codes departments may approve a reduction in required aisle width.



- A. Parking Angle
- B. Stall Width
- C. 19'-0 Stall to Curb
- D. Aisle Width
- E. Width Per Vehicle
- F. Center to Center Width of Double Row with Aisle Between

OFFSTREET PARKING REQUIREMENTS